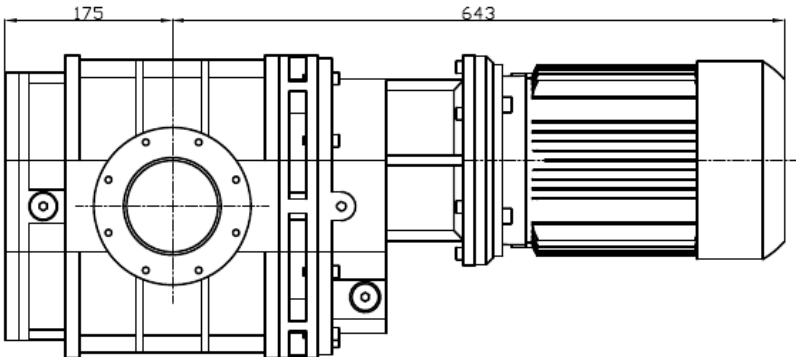
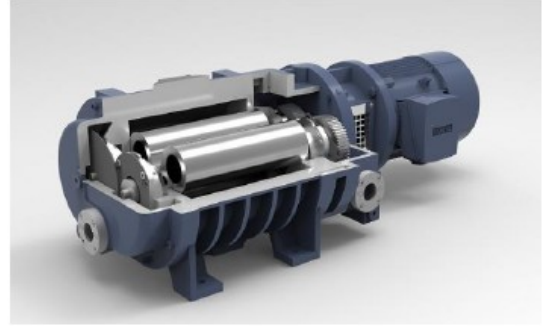
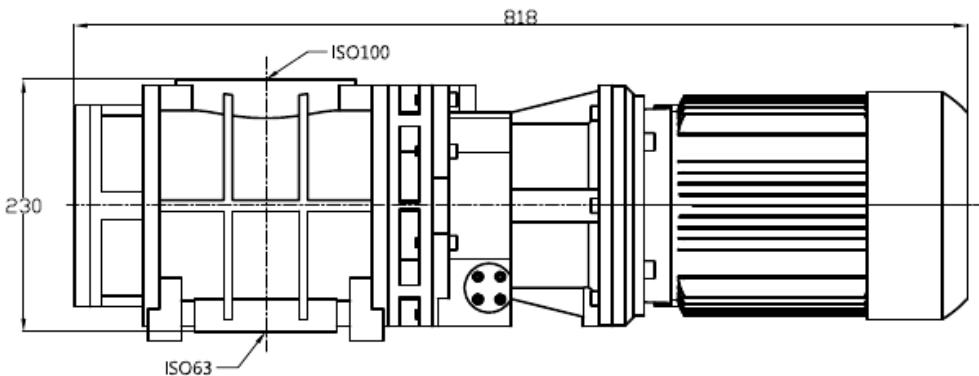
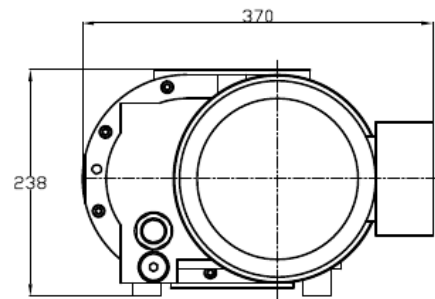


Vacuum Pumps America Inc. VPA-RT900 Roots Vacuum Pump

Parameters		Units	Data
Pumping Speed	50 Hz	M ³ /h	750
	60 Hz		900
Max allowed differential pressure	50 Hz	mbar	73
	60Hz	mbar	60
Max Inlet Pressure	50Hz	mbar	13
	60Hz	mbar	11
Ultimate Vacuum with Double Stage RVP		mbar	4×10 ⁻⁴
Motor Power		kW(hp)	2.2 (3.0)
Inlet Flange		--	ISO-100
Outlet Flange		--	ISO-63
Oil Need		L	0.45
Ambient Temp.		°C	5~40
Weight without motor		kg	180



VPA-RT900 are air cooled dry roots vacuum pump made of cast iron housing and ductile iron rotors. TEFLON coated version available upon request.



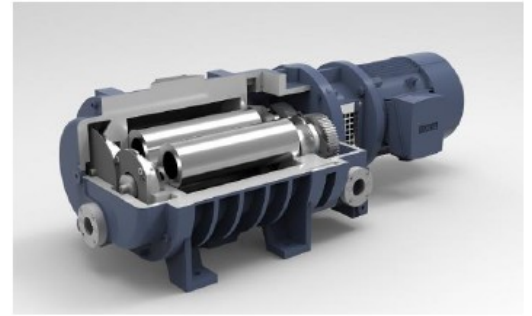
Contact: sales@vpamerica.com

Phone: 416-407-0350

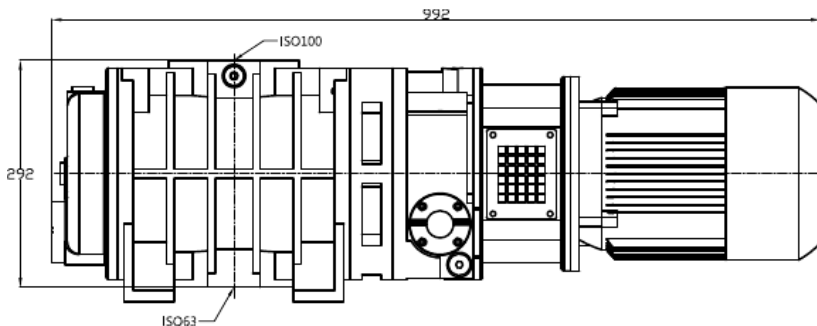
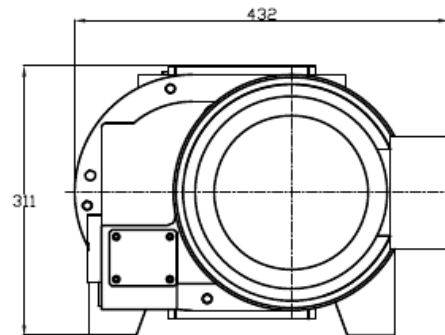
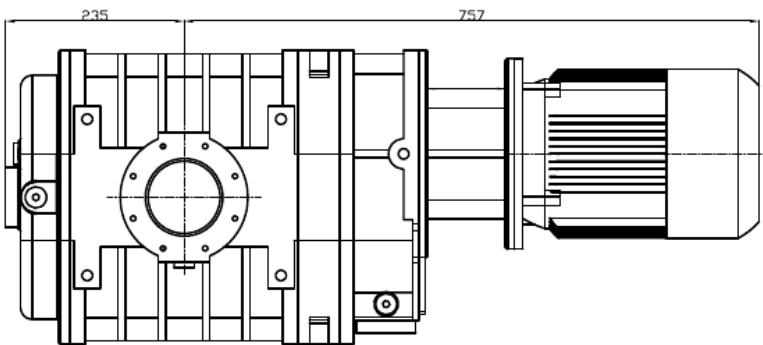
Dimensional drawings for VPA-RT900 Roots Vacuum Pumps. All dimensions are in mm. Length of the vacuum pump will be different by using different motors. VPA-RT900/Ex will have Explosion Proof motor on it.

Vacuum Pumps America Inc. VPA-RT1500 Roots Vacuum Pump

Parameters		Units	Data
Pumping Speed (FAD)	50 Hz	M ³ /h	1300
	60 Hz		1500
Max allowed differential pressure	50 Hz	mbar	73
	60Hz	mbar	60
Max Inlet Pressure	50Hz	mbar	13
	60Hz	mbar	11
Ultimate Vacuum with Double Stage RVP		mbar	4×10 ⁻⁴
Motor Power		kW(hp)	3.7 (5.0)
Inlet Flange		--	ISO-100
Outlet Flange		--	ISO-100
Oil Capacity		L	1.35
Ambient Temp.		°C	5~40
Weight without motor		kg	210



VPA-RT1500 are air cooled dry roots vacuum pump made of cast iron housing and ductile iron rotors. TEFLON Coated version available upon request.

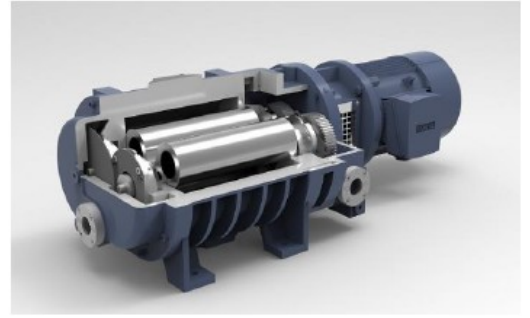


Dimensional drawings for VPA-RT1500 Roots Vacuum Pumps. All dimensions are in mm. Length of the vacuum pump will be different by using different motors. VPA-RT1500/Ex will have Explosion Proof motor on it.

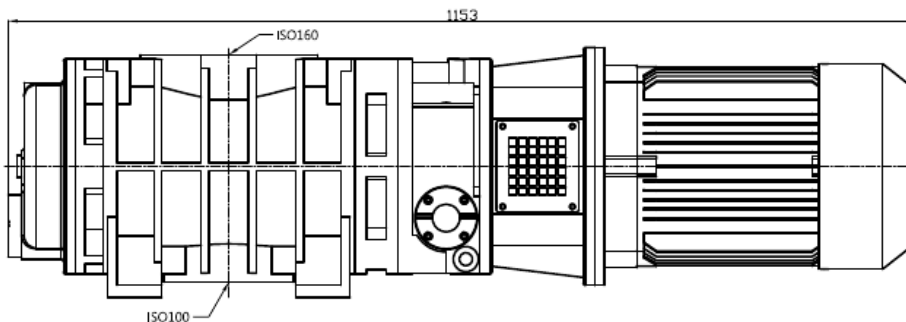
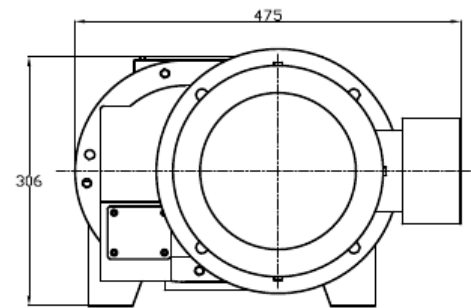
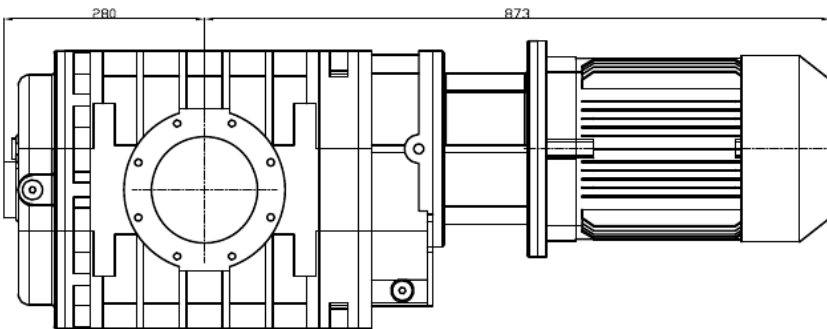
For more information please contact Vacuum Pumps America Inc. by e-mail: sales@vpamerica.com or phone: 416-407-0350

Vacuum Pumps America inc. VPA-RT2000 Roots Vacuum Pump

Parameters		Units	Data
Pumping Speed (FAD)	50 Hz	M ³ /h	1700
	60 Hz		2000
Max allowed differential pressure	50 Hz	mbar	73
	60Hz	mbar	60
Max Inlet Pressure	50Hz	mbar	13
	60Hz	mbar	11
Ultimate Vacuum with Double Stage RVP		mbar	4×10 ⁻⁴
Motor Power		kW(hp)	5.5 (7.5)
Inlet Flange		--	ISO-160
Outlet Flange		--	ISO-100
Oil Capacity		L	1.35
Ambient Temp.		°C	5~40
Weight without motor		kg	260



VPA-RT2000 are air cooled dry roots vacuum pump made of cast iron housing and ductile iron rotors. External bypass valve available upon request.



Dimensional drawings for VPA-RT2000 Roots Vacuum Pumps. All dimensions are in mm. Length of the vacuum pump will be different by using different motors. VPA-RT2000/Ex will have Explosion Proof motor on it.

For more information please contact vacuum Pumps America inc. by e-mail: sales@vpamerica.com or phone: 416-407-0350